



NPG2-1000Ah

Valve-regulated lead-acid battery



DEEP CYCLE GEL SERIES

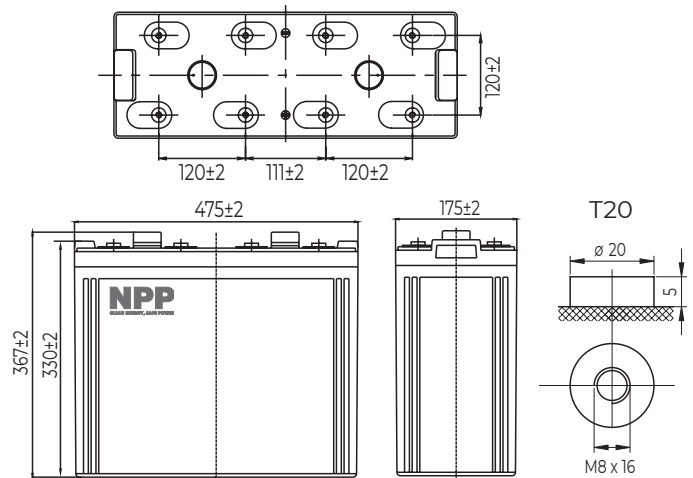
Characteristics

Nominal voltage	2V (2 cells per unit)	
Nominal capacity at 10 hours rate/1.8V (25°C)	1000Ah	
Capacity (25°C)	20 Hours rate/1.8V	1058Ah
	5 Hours rate/1.8V	815Ah
Terminal type	T20	
Torque	12.3±2.5N.m	
Approx. internal resistance (25°C)	0.3 mΩ	
Dimensions	Length	475±2mm (18.70inch)
	Width	175±2mm (6.89inch)
	Height	330±2mm (12.99inch)
	Total height	367±2mm (14.45inch)
Design Life (stand-by)	JIS at 25°C	18 years
	Eurobat at 20°C	>12 years
Weight	63.00kg (138.90 lbs)±3%	
Nominal operating temperature	25°C±3 (77±5°F)	
Operating temperature range	Discharge	-15°C~50°C (5°F~122°F)
	Charge	-10°C~50°C (14°F~122°F)
	Storage	-20°C~50°C (-4°F~122°F)
Float charging voltage at 25°C	2.25V~2.30V	
Cyclic charging voltage at 25°C	2.40V~2.45V	
Temperature compensation	Float charge	-3 mV/°C/cell
	Cycle charge	-5 mV/°C/cell
Max. charging current (A)	200A	
Max. discharge current for 5 seconds	5500A	
Self discharge rate (25°C)	≤3%/month	
Battery container ABS UL94-HB	V-0 optional	

Overview

NPP Power AGM GEL Series are manufactured following the highest demands in the deep cycle and renewable energy applications. The batteries use colloidal or foamed silica gel to immobilize the electrolyte, which further enhances the cycling stability. Available in top and front terminal types.

Dimensions & Terminal Type (mm)



Certification & Compliances



Compliant to: EUROBAT, RoHS, WEEE's and Reach. Manufactured according to IEC 60896-21 / 22

Construction

Component	Positive Plate	Negative plate	Container	Separator	Electrolyte	Safety valve	Terminal
Raw material	Lead dioxide	Lead	ABS (V-0 opt.)	AGM	Sulfuric Acid Gel	Rubber	Copper

Constant current discharge characteristics at 25°C

(Ampere/battery)

F.V/Time	15min	30min	60min	2h	3h	4h	5h	6h	8h	10h	20h
1.60V/cell	1250	870	600	360	261	206	171	151	120	102	53.4
1.65V/cell	1220	853	588	358	260	205	170	150	120	102	53.3
1.70V/cell	1175	827	570	355	258	203	169	149	119	101	53.2
1.75V/cell	1135	806	558	350	256	202	168	148	118	101	52.9
1.80V/cell	1075	777	540	341	251	196	163	144	114	100	52.5

Constant power discharge characteristics at 25°C

(Watts/battery)

F.V/Time	15min	30min	60min	2h	3h	4h	5h	6h	8h	10h	20h
1.60V/cell	2288	1627	1140	695	512	404	338	297	240	203	107
1.65V/cell	2233	1594	1117	691	509	401	336	296	238	202	107
1.70V/cell	2150	1546	1083	685	505	399	333	294	236	202	106
1.75V/cell	2077	1508	1060	675	502	396	331	292	235	200	106
1.80V/cell	1967	1453	1026	658	492	384	321	283	228	199	105

The above characteristics represent average values and can be obtained within three charge and discharge cycles. The batteries must be fully charged before testing. The data in this document is subject to change without notice and become contractual only after written confirmation. Please contact NPP Power for the latest available version.

NPP Power (Vietnam) Co., Ltd.

Lot A22.3, Road C4, Thanh Thanh Cong Industrial Zone, An Hoa Ward, Trang Bang Town, Tay Ninh Province, Vietnam

Guangzhou NPP Power Co., Ltd.

No.67 Lianglong Road, Huashan Town, Huadu District, Guangzhou, China
Email: info@nppower.com.cn Tel. +86 20 37887 390